

ORIENT NO.7

DONG FANG OFFSHORE CO., LTD.

VESSEL INFORMATION

Registry	ROC
Year of Delivery	2009
Classification	CR + A1, Towing Vessel, (E), + AMS / ABS
Type	Ocean Going/Anchor Handling/ Towing Tug

PRINCIPAL PARTICULARS

Dimensions	43m x 12.6m x 5.6m
GRT / NRT / DWT	816T / 245T / 655T
Deck Strength	5.0 mt/m ²
MIN Working Draft	4.3m
Fuel (90%)	476 mt
FW	80 mt
FW Maker	12.4 mt/day
SWL	300 mt
Main Deck Space	18m x 8.9m
Endurance	7,200 nautical miles @ 12 knots

SPEED

Speed	12 knots
-------	----------

BOLLARD PULL

Bollard Pull	52T
--------------	-----

ACCOMMODATION

Accommodation	Fully air-conditioned for 24 men
---------------	----------------------------------

LIFE SAVING EQUIPMENT

Lifesaving	Comply with SOLAS requirements
Liferafts	2 x 25 men
Rescue Boat	1 x 6 men

FIRE-FIGHTING & ANTI-POLLUTION EQUIPMENT

Firefighting	Comply with SOLAS requirements
Fire Monitors	2 fixed foam/water fire monitors of 3000 litres/min each @ 120m head capacity. 1 x Fire pump of 360m/hr

PROPULSION SYSTEM

Main Engines	2 x Yanmar 8N21A-EV diesel engines producing 1800 bhp each @ 900 rpm c/w 2 x Reintjes WAF 1563L gearboxes, ratio 4.846:1
Main Engines Consumption	11,000 litres MGO and 36 litres lube oil per 24 hours @ full power. 7,200 litres MGO and 16 litres lube oil per 24 hours @ economic cruising speed of 10 knots
Propulsion	2 x fixed propellers 2800mm diameter, Aluminum Nickel in kort nozzles
Bow Thruster	Brunvoll FU-45-LTC-1375, 380kW, 6.2T thrust
Steering Gear	Electro hydraulic, 7T torque

GENERATORS

Generators	3 x 400kW, 380V/3/50Hz, Caterpillar model 3412DITA diesel driven, Emergency Generators CAT 3056 124HP/92.5KW
Generator Consumption	580 litres MGO and 13 litres lube oil per 24 hours

TANK CAPACITIES

Fuel Oil Purifier	Mitsubishi self cleaning fuel oil purifier SJ-700
Lube Oil Purifier	Mitsubishi self cleaning lube oil purifier SJ-10G

TOWING & ANCHOR HANDLING EQUIPMENT

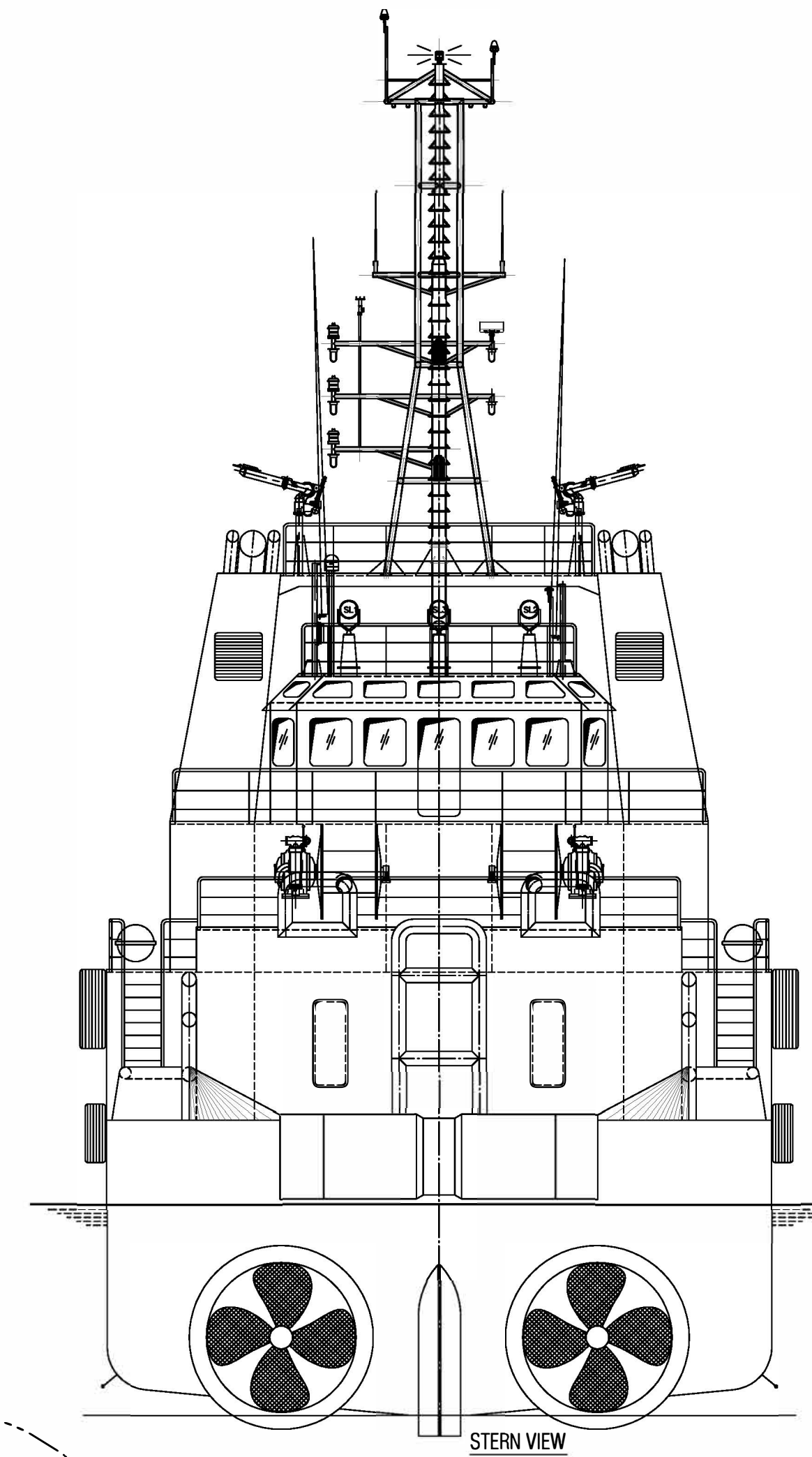
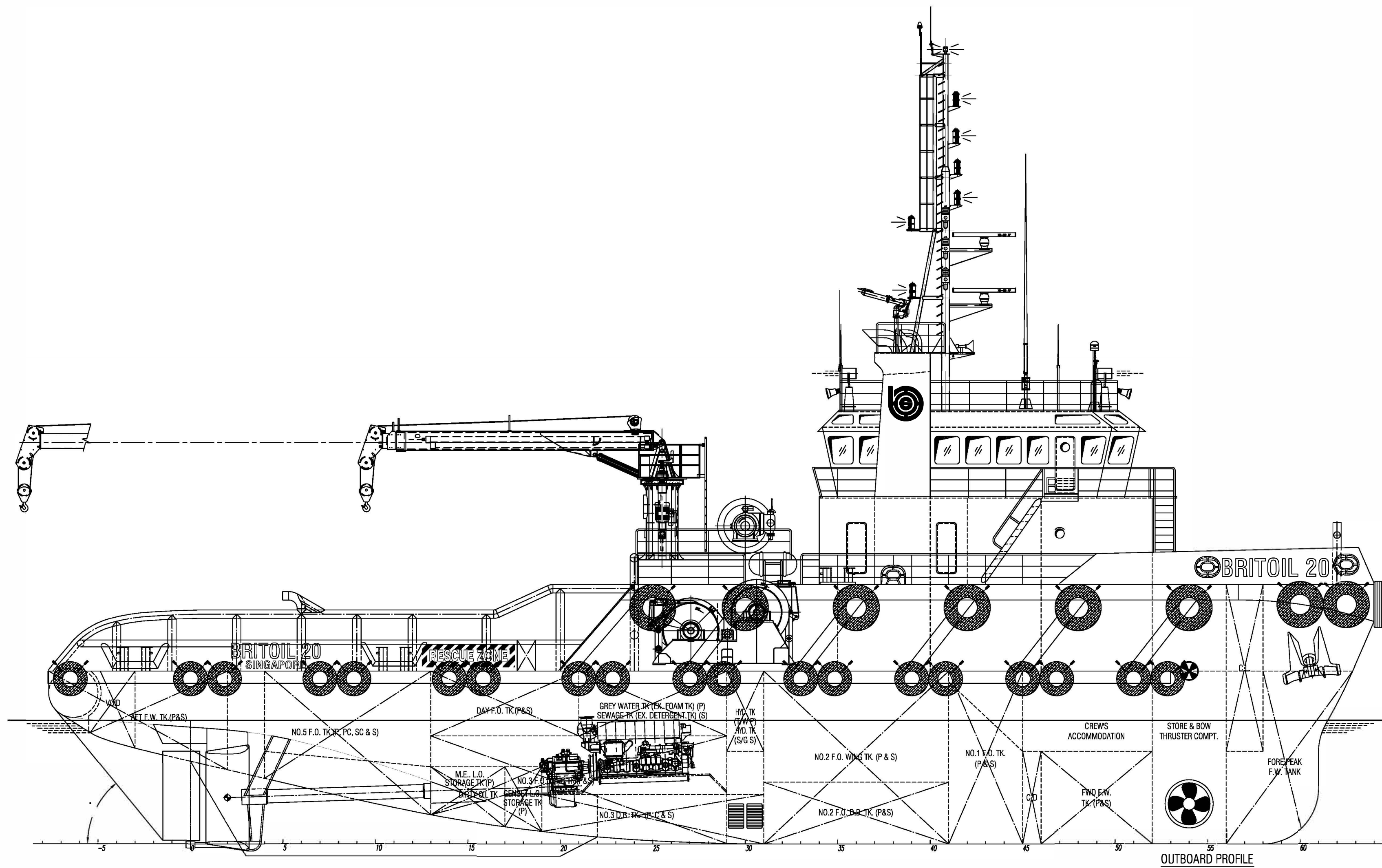
Towing / Anchor winch	BRATTVAAG double drum waterfall type SL75-2T hydraulic winch with remote controls in wheelhouse 75T pull @ 14m/min 43T pull @ 22m/min Wire Capacity :- 1000m x 52mm diameter Brake holding : 140T
Towing pins & Shark jaws	Karmfork combination – 1 set towing pins & 2x shark jaws
Stern Roller (Size)	L-4.39m; Dia-1.67m
Wire Storage Reels	1 x 9.2T line pull @ 0-26 m/min, storage reels will contain 1000M x 52mm dia

DECK MACHINERY

Anchors	2 x 2100kg stockless anchors
Tugger Winch	2 x BRATTVAAG 9.5T line pull @ 0-36m/min
Crane	North American Crane model MCT2-2568, MOD – 2.6T @ 20.7m
Anchor Windlass	Hydraulic 7.7T @ 0-14m/min BRATTVAAG
Anchor Chain	2 x 385m x 36mm diameter U3 steel stud link chain
Dispersant Booms	2 sets spray nozzles, type UOC 600, 1 (M) x 1 (F), brass, duty 276 liters @ 4.14 bar.
Fendering	Flat bar doubler plates of 400mm x 25mm cross section welded to side shell

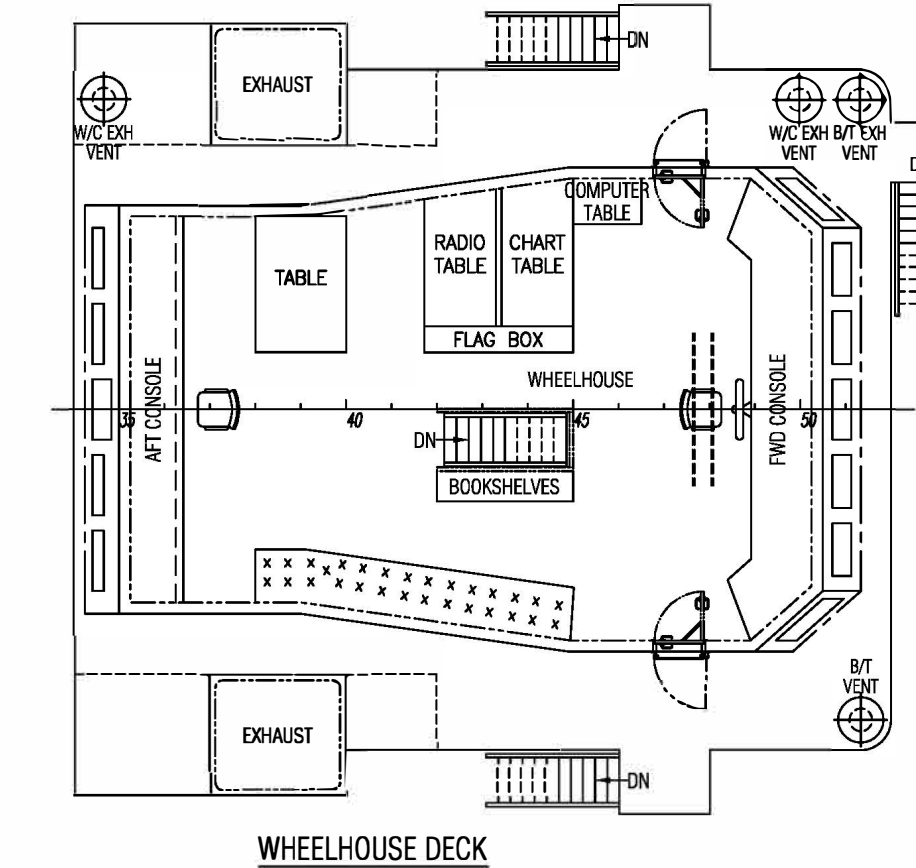
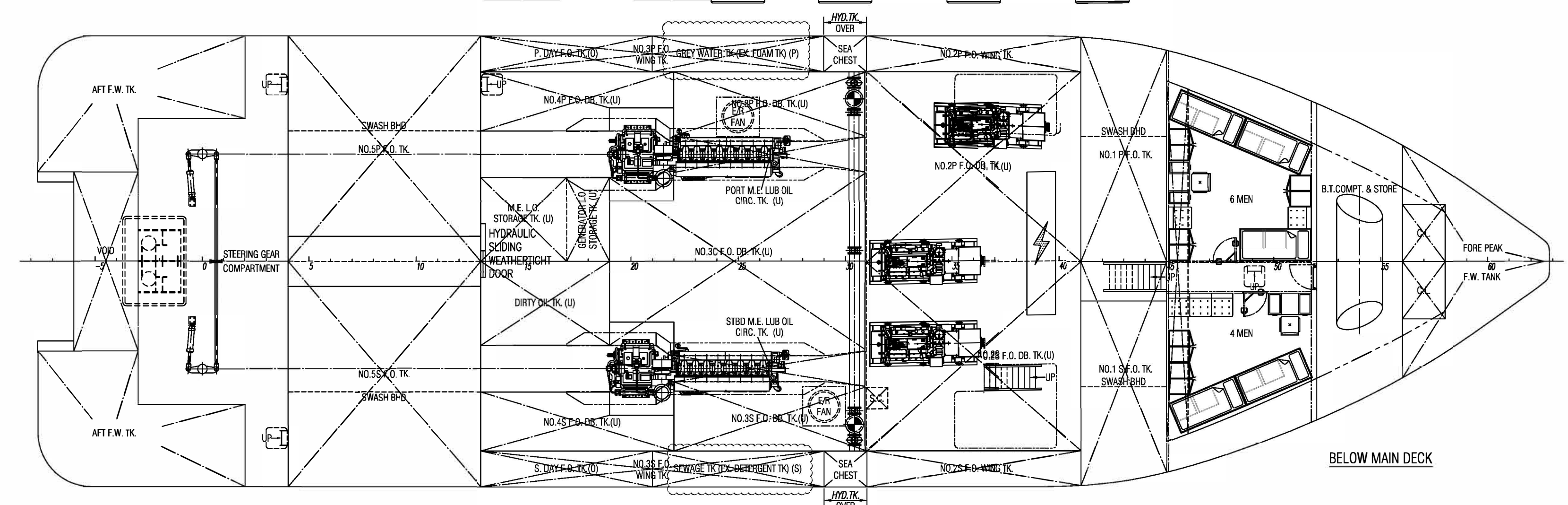
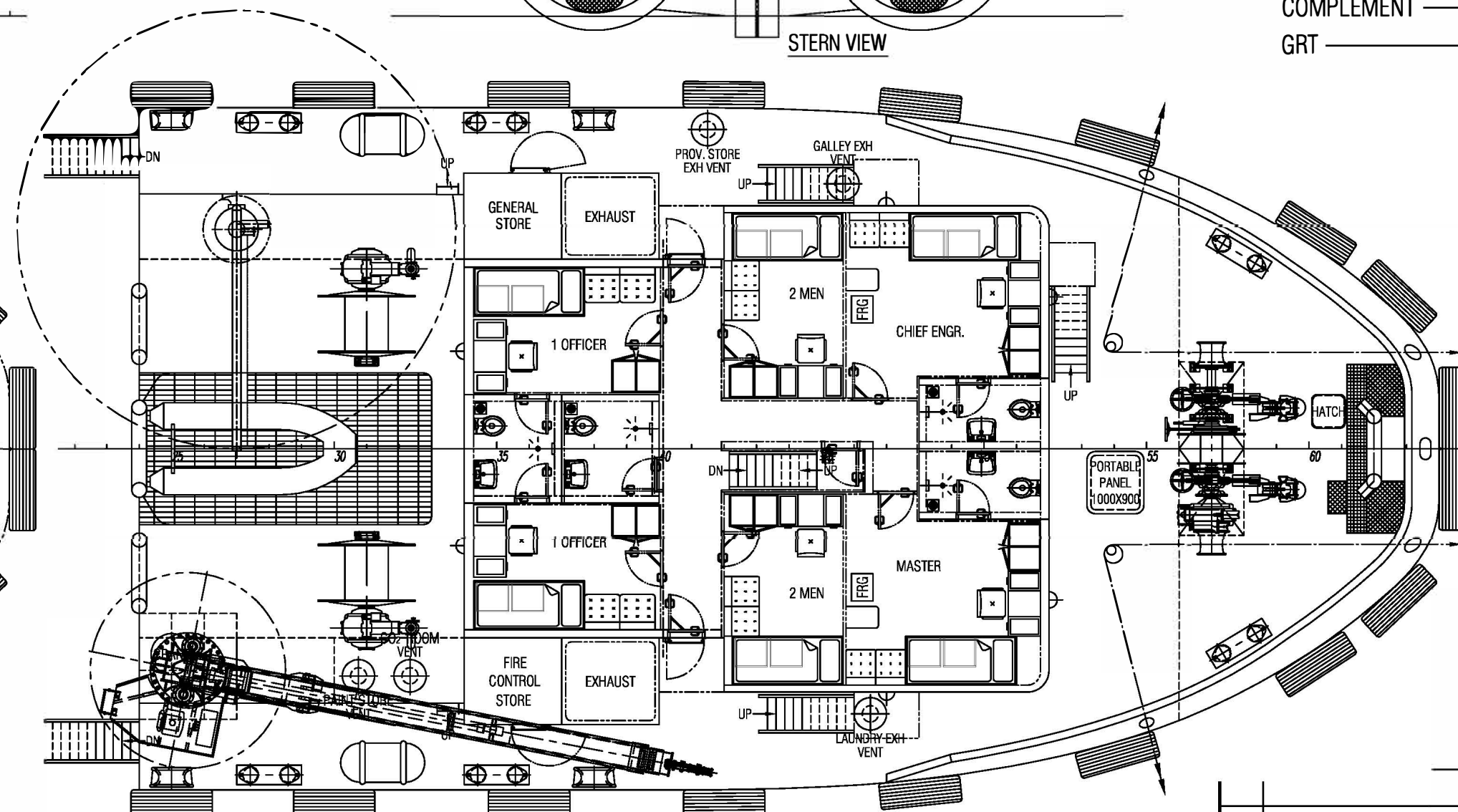
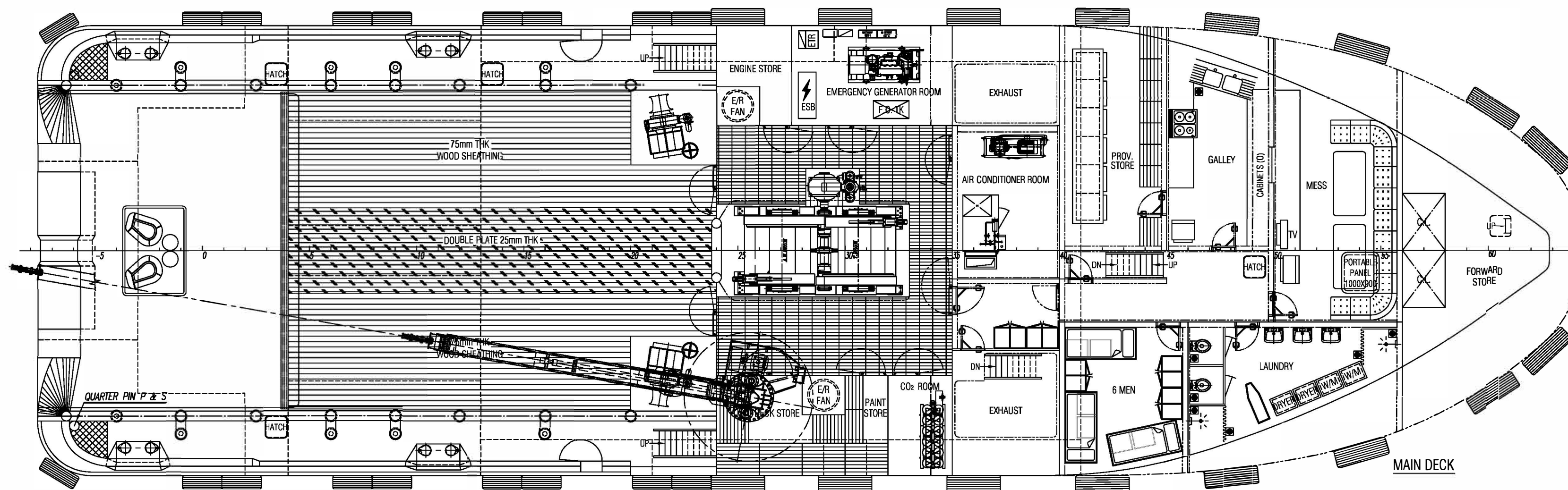
NAVIGATIONAL AND COMMUNICATION EQUIPMENT

GMDSS Radio Console	FURUNO model RC-1800T-25, A1-2-3 radio package. 24VDC/220VAC with manual c/over to emergency supply, to meet GMDSS requirement. Complete with: -1x HF/MF SSB radiotelephone, FURUNO model FS-2570 (250W); -2x INMARSAT C terminal, FURUNO model FELCOM-15
VHF	2 x VHF/DSC marine radio telephones. FURUNO model FM-8500 (25W)
Radar	2 x radar. Model FAR-2117
Gyro & Automatic Pilot	1 x Gyro, SIMRAD model RGC 80; 1 x Autopilot, Anschuetz model NP 60.
Other Navigation and Communication Equipment	EPIRB, Radar Transponders, Navtex Receiver, GPS Navigator, Anemometer, Echo Sounder, Speed log, AIS, SSAS, Globalmap 9200C GPS Chart Plotter, Omni-Direction TV System, P.A. System, Common Battery Powered Telephone, Inmarsat F, ICOM VHF Radiotelephones



PRINCIPAL PARTICULARS

LENGTH O.A.	43.00 m
LENGTH W.L.	40.20 m
LENGTH B.P.	36.90 m
BEAM MLD.	12.60 m
DEPTH MLD.	5.60 m
DRAFT DESIGNED	4.00 m
FRESH WATER	130 m ³ (approx.)
FUEL OIL	500 m ³ (approx.)
M/E LUB OIL	8.5 m ³ (approx.)
GENERATOR LUB OIL	5.3 m ³ (approx.)
DECK MACHINERY HYDR. OIL	3.1 m ³ (approx.)
STEERING GEAR HYDR. OIL	3.1 m ³ (approx.)
DIRTY OIL	14.0 m ³ (approx.)
DETERGENT	10.0 m ³ (approx.)
FOAM	10.0 m ³ (approx.)
COMPLEMENT	24 MEN
GRT	tons



ORIENT NO.7

A Revised as per Engineering Department comments				Alan	4/11/10	
REV.	DESCRIPTIONS			BY	DATE	
MODIFICATIONS						
SHIP:	43m (3600BHP) T.S. TUG					
TITLE:	GENERAL ARRANGEMENT					
OWNER:	BRITOIL OFFSHORE SERVICES PTE LTD					
CLASS:	A.B.S x A1 x AMS (C) TOWING VESSEL					
YARD NO.:	H200403, H200404, H200405 & H200406					
BUILDER:	P.T. BRITOIL OFFSHORE, INDONESIA					
BRITOIL OFFSHORE SERVICES PTE LTD						
79 TECH PARK CRESCENT, TUAS TECHPARK, SINGAPORE 638068						
TEL: +65 6862 1035 FAX: +65 6861 6234						
Website: http://www.britoil.com.sg E-mail: winston.lee@britoil.com.sg						
THIS DRAWING AND THE INFORMATION CONTAINED HEREIN ARE SUPPLIED ON THE UNDERSTANDING THAT THEY ARE THE EXCLUSIVE PROPERTY OF BRITOIL OFFSHORE SERVICES PTE LTD. THEY MUST NOT BE USED OR REPRODUCED IN WHOLE OR IN PART WITHOUT PERMISSION IN WRITING.						
DRAWN	CHECKED	APPROVED	SCALE	SHEETS NO	DRAWING NO.	REV
DANNY	WINSTON	DAVID	1:100	1 OF 1	C4227/G-1	A
4/11/2010	4/11/2010	4/11/2010				

SIZE: A1 (600x375), UPDATED ON 25/01/2012, PRINTED ON 25/01/2012